

Pacojet : cranking shaft up manually

The shaft is extended and beaker cannot be removed?



Remove the 4 screws of top metal plate
Take metal plate off

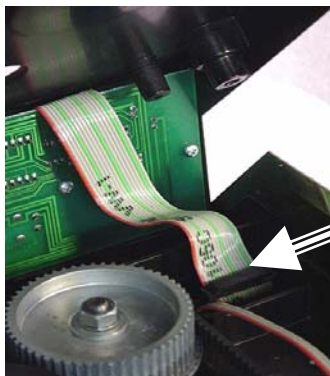


Remove the 6 sunken screws of black plastic top cover.
Note: if one of the screws is covered by a red or blue plastic cap, remove it by penetrating it with a pointed object in order to pry (prise) it out.

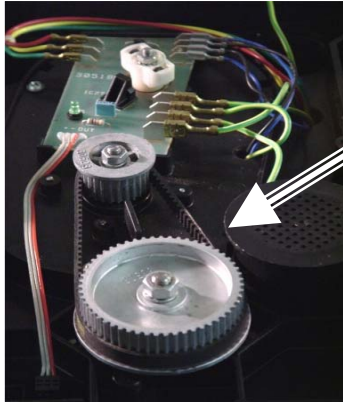
Note: removal of plastic cap requires prior approval of Pacojet AG as otherwise warranty is voided.



Grasp top cover at back side and lift up

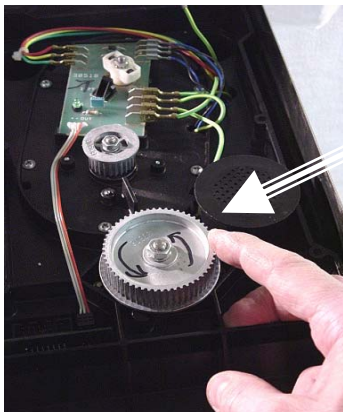


Do not unplug the flat band (ribbon) cable.
Attached to this cable, carefully allow the top cover to hang at side of housing (casing).

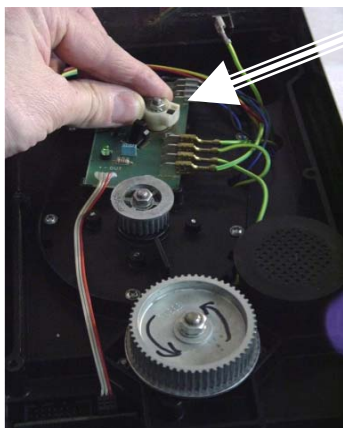


Remove toothed belt from front belt wheel

if necessary, use a flat screw driver to lift the belt up, off the bigger belt wheel at front end



Turn the belt wheel counter-clockwise.
 Note: it is possible that the belt wheel will be hard to turn for the first few rotations. However, it will become easier. Keep turning and the shaft will gradually rise. Turn until the shaft is all the way up/wheel turns no further.



If the white plastic speed pulser turns as well then you must hold it in place

When shaft is up remove the outer beaker, the blade/spray guard assembly (rubber disc).
Check the blade holder at shaft end to see that it still has magnetic properties and is not mechanically damaged*.

Remount the toothed belt, close top cover (set front edge first) then replace the 6 screws. Put metal top plate (4 screws) back on.

* if magnetic blade holder is damaged or demagnetized it will no longer hold the pacotizing blade. The blade holder must be replaced with new one.
Call service agent nearest you or Pacojet AG in Switzerland.
 Otherwise switch Pacojet on and do a test run, attaching only the black plastic "outer/protective" beaker. If the shaft completes one cycle (down and back up) without indicating **EE** on the display panel, then the machine is fully functional again.